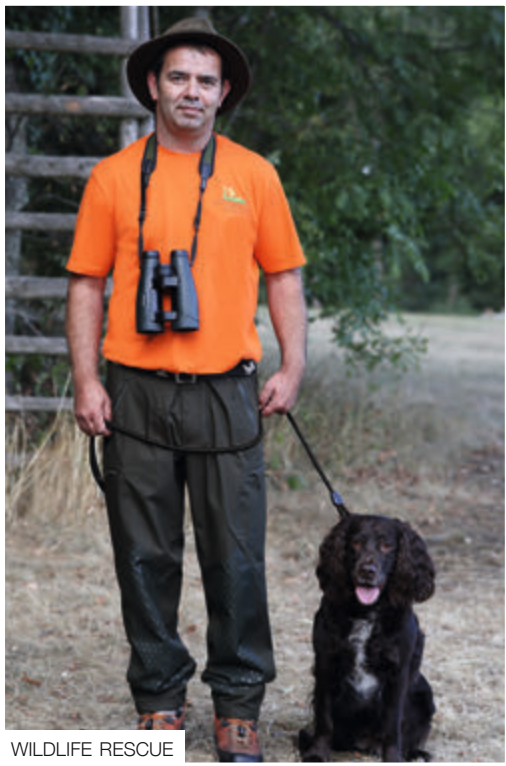




**JAKO** TEAMWEAR





WILDLIFE RESCUE



PAINTING COMPANY



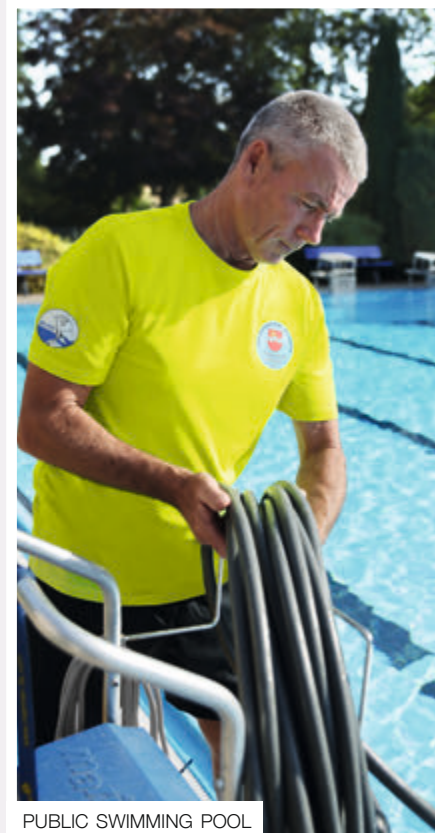
DOCTOR'S OFFICE



PHARMACY



WILDLIFE PARK



PUBLIC SWIMMING POOL



AGRICULTURE





FIRE BRIGADE



GYM



WINERY

# ONE TEAM – ONE OUTFIT

Every team is unique – and therefore needs a common outfit. This applies to sport as well as work and leisure. That's why we offer the optimal equipment for every team. Whether in a doctor's office, an industrial company or in agriculture: WE ARE TEAM.



LOGISTICS



GARDEN CENTER



CONSTRUCTION COMPANY



# SERVICE

We are experts in equipping teams and have always focused on our customers. Individual support and comprehensive, personal service are important to us. In addition, we have developed digital solutions to be the perfect partner for all aspects of team equipment.







### **WE ARE PERSONAL**

For us, personal contacts and long-term relationships are the most important components of trusting and cooperative work. Our broad network of specialist retailers guarantees personal support, qualified advice and extensive on-site service.

### **WE ARE DIGITAL**

We offer digital solutions for a fast and efficient processing of orders and support you in setting up your own online shop for your team. Simple ordering processes for all team members and individual configurations of the desired articles set new standards for team orders.

### **WE ARE RELIABLE AND FAST**

We know how important a fast delivery is. That is why we have set ourselves the goal of shipping all orders within 24 hours of receiving the order. With our fully automated AutoStore® warehouse system, we can process the orders we receive every day even faster and more reliably.

### **WE ARE FLEXIBLE AND INDIVIDUAL**

We always have a solution. From graphic marketing support to a tailor-made marketing concept for specific projects. We are happy to support. In terms of logistics, we also meet individual requirements and offer additional services. A specific article labeling, shipping in the desired box or our repair service. We are flexible and offer the right concept depending on your needs.









# TEAMWEAR

## WORKMANSHIP

We pay attention to first-class workmanship and stand for durability and a high quality standard. We ensure this, for example, with reinforced shoulder seams, double seams in the hem and cuffs or through high quality accessories.

## AVAILABILITY

We stand for availability. 95% of our articles are in stock in our JAKO logistics center at all times. The 25.000 pallet spaces and one of the largest high rack warehouses in Europe enable an optimal supply of goods and ensure the availability of our products.

## SUSTAINABILITY

We are fair and take responsibility. That is why we have committed ourselves to steadily increasing the proportion of sustainable materials in our products. In the teamline ORGANIC, we have only used organic cotton and thus created a sustainable teamwear.

## COLOURS

We have the right colour for every team. A large selection of colours and an optimal colour concept ensure a uniform appearance. The high quality of the dyes we use guarantees intense colours and colour fastness. Even after numerous washes.

## STANDARDS

We place high demands on our products and suppliers. The specifications of dimensional stability, colour management, material properties and product safety must be met with every delivery. We check this on site at the supplier and when the goods arrive at our warehouse.

## RUNNING TIMES

We offer planning security. Long running times for our articles and teamlines enable long-term availability of the uniform team equipment. This saves time and money, because the new team members can also obtain the existing team collection quickly and easily.

## SIZES

Our articles are available from S - 5XL and in numerous styles for women from 34 - 48. The most important articles are also available for children in 116 - 164. A classic cut for men, a fitted cut for ladies or plus sizes - we have the right articles for all team members.

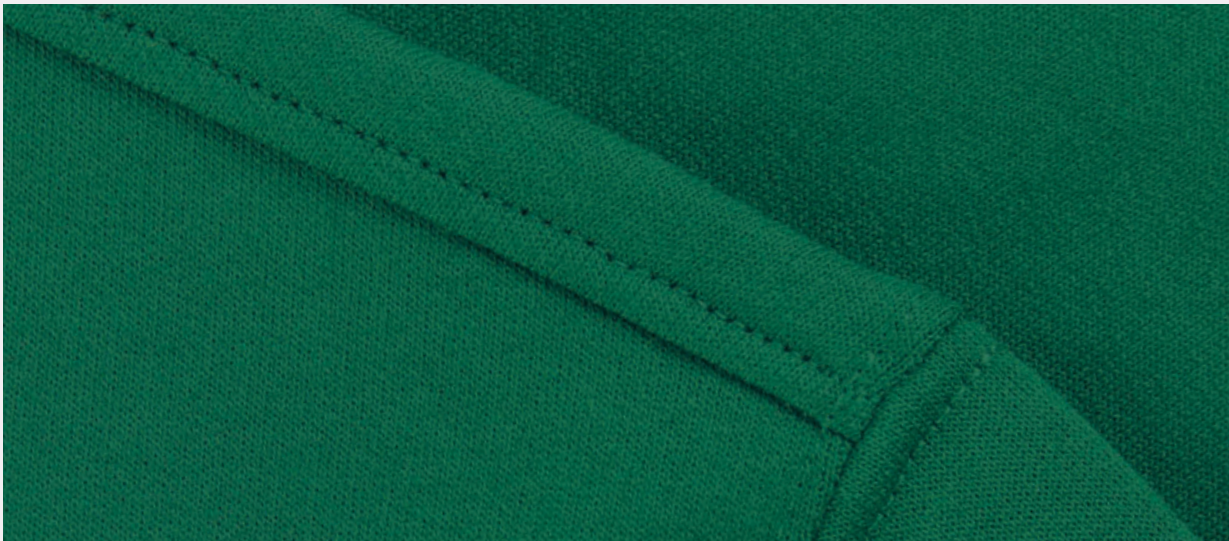
## MATERIALS

In our teamlines, we offer different fabric types for almost all areas of use and teams. Sustainable natural fibers, functional polyester, innovative fiber blends or waterproof and breathable fabrics for our jackets. We have the suitable material.

## INDIVIDUALISATION

If the right article is not there, we produce special models exactly as requested. Whether your own colour or your own design. Our product development implements the individual ideas. Our specialist retailers accompany the process from creation to delivery.







# JAKO TEAMWEAR

## QUALITY AND SAFETY

We place high demands on our teamwear and our partners. We concentrate on selected main suppliers with whom we work long-term. In addition, we have defined our own standards for physical textile tests such as washing behavior, tear resistance or colour fastness. These are controlled by independent test laboratories during development and production.

## COLOURS

---

Our articles are intensively tested for their colour fastness. These tests ensure that our teamwear retains its colour even under heavy use and under numerous external influences such as friction, moisture, light or heat.

## FIT

---

Our teamwear fits and holds its shape. We check our articles several times for optical properties such as dimensional stability and seam behavior. In this way we guarantee an optimal fit as well as stable seam processing and dimensional stability.

## MATERIAL

---

We stand for high quality teamwear. Our textiles are tested for physical properties such as tear resistance, elasticity or abrasion resistance. This is how we guarantee a high level of resistance and a long service life.

# TEAMLINE DOUBLETEX



## TESTED WORKWEAR

Our teamline DOUBLETEX is specially designed for top performance in business and leisure time. The Hohenstein quality label “**Tested Workwear**” distinguishes textiles with particularly high demands on product safety and quality. This label confirms that our teamline DOUBLETEX articles meet these high requirements.



## Hohenstein tests our teamline DOUBLETEX for the following properties:

- Colour fastness such as light, perspiration, rub and wash fastness
- Colour fastness with strong heat development
- Physical properties such as seam and tear strength, elasticity and pilling
- Optical properties such as dimensional stability, twisting of the seams and the appearance after numerous intensive washes





## TEAMLINE **ORGANIC**

**Cotton from controlled organic cultivation in the complete teamline ORGANIC**



**All articles are pre-shrunk and washable at 60 °C. As well as dimensional stable and colourfast even after several washes**



**Very long durability due to reinforced seams and combed, ring-spun cotton fibres**



**High-quality accessories such as buttons, zips and zip pullers with JAKO logo**



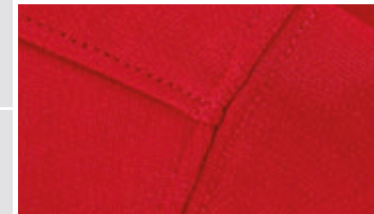
**Elastic ribbed cuffs for a perfect fit and a pleasant wearing comfort**



TEAMLINE  
**DOUBLETEX**



**Exclusively developed and highly functional JAKO material mix of cotton and polyester**



**Innovative VORTEX® yarn technology and reinforced seams for high resistance and dimensional stability**



**High-quality accessories such as buttons, zips and zip pullers with JAKO logo**



**All DOUBLETEX articles are certified with the quality label “Tested Workwear“ by the Hohenstein Institute**



**All articles suitable for professional textile washing according to DIN EN ISO 15797**



C6120  
T-SHIRT  
ORGANIC



C6121  
T-SHIRT  
ORGANIC STRETCH



C6320  
POLO  
ORGANIC



C6321  
POLO  
ORGANIC STRETCH



C6420  
LONGSLEEVE  
ORGANIC



C8820  
SWEATER  
ORGANIC



C8620  
ZIP TOP  
ORGANIC



000  
WHITE



100  
RED



130  
MAROON



240  
OLIVE



260  
GREEN



270  
LIME



300  
CITRO



360  
ORANGE



380  
SAND



400  
ROYAL



460  
ICE BLUE



520  
LIGHT GREY  
MELANGE



800  
BLACK



830  
ANTHRACITE



840  
STONE GREY



900  
SEABLUE



C6720  
HOODED SWEATER  
ORGANIC



C6820  
HOODED JACKET  
ORGANIC



C6130  
T-SHIRT  
DOUBLETEX



C6330  
POLO  
DOUBLETEX



C8830  
SWEATER  
DOUBLETEX



C8630  
ZIP TOP  
DOUBLETEX



C9830  
SWEATER JACKET  
DOUBLETEX







# CIRCULAR ECONOMY

The world's resources are becoming constantly rarer and the environmental impact is becoming ever clearer. We want to make a contribution to making our textiles recyclable and give them another life.



In 2022, we launched a recycling project. Together with our partner clubs in Germany and Switzerland, we collected discarded sportswear. **The result you can see in the image on the left: A jersey made from completely recycled textiles.**

Would you like to find out how a new jersey is made from the collected textiles or get to know more of our projects?

**Scan the QR code now!**





## SUPPLY CHAINS

It is important for us to know where, by whom and how our articles are produced. Therefore, suppliers are carefully selected and regularly visited. We concentrate on a few main suppliers with whom we have a long-term and very cooperative relationship. In many personal discussions, we work out concepts and solutions with our long-term partners on the responsible social and ecological issues in order to manufacture our products in a fairer and more ecologically sustainable way.



# SUSTAINABILITY IS TEAMWORK

## OUR TEAM FOR A BETTER WORLD

Sustainability for us is the responsible use of resources and long-term oriented corporate management and also the fair treatment of people. On our “Our team for a better world” website we would like to tell you more about our goals and projects on the topic of sustainability.







# TEAM CREATOR

## DESIGN YOUR NEW TEAM-OUTFIT!

As individual as every team. With our 3D configurator, there are no limits to your creativity.



Whether for company runs, team outfits or as gifts - configure individual designs from various patterns, colours and cuts for every team and every sport.



Choose a collar and sleeve variant to configure the desired look.



After the order your individual outfit will be produced and delivered within 8 weeks.

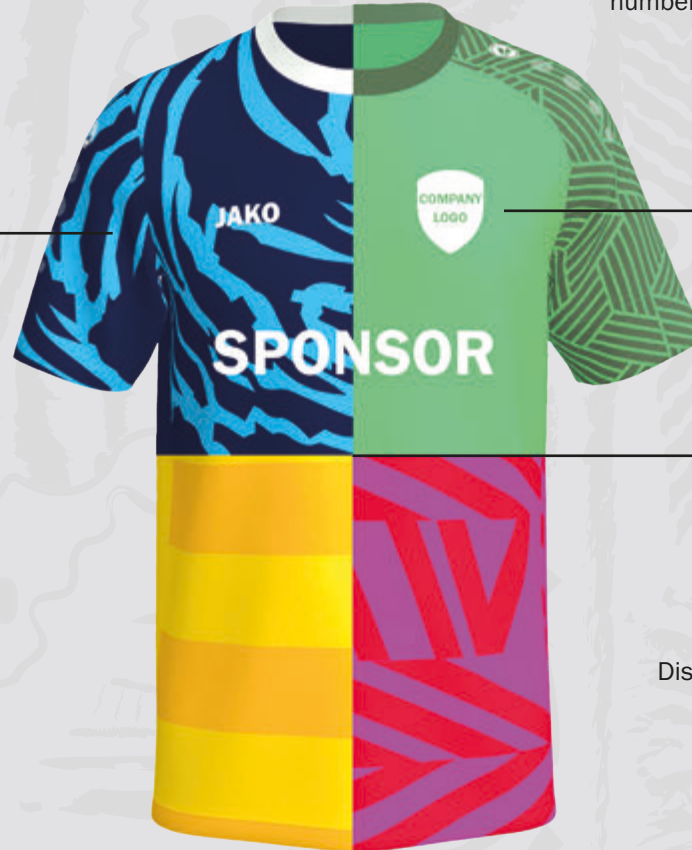


## DESIGN OPTIONS

Our TeamCreator offers a huge number of design options like colours, patterns and logos.

## CUSTOMIZATION

You can customize the jersey with numbers, names and further individual options.



## COLOUR VARIETY

Discover numerous colours for creating unique designs.

## 3D VISUALIZATION

An all-round success:  
With the 3D visualization you can view the jersey from all sights.



[DISCOVER NOW](#)



# JAKO TEAM SHOPS

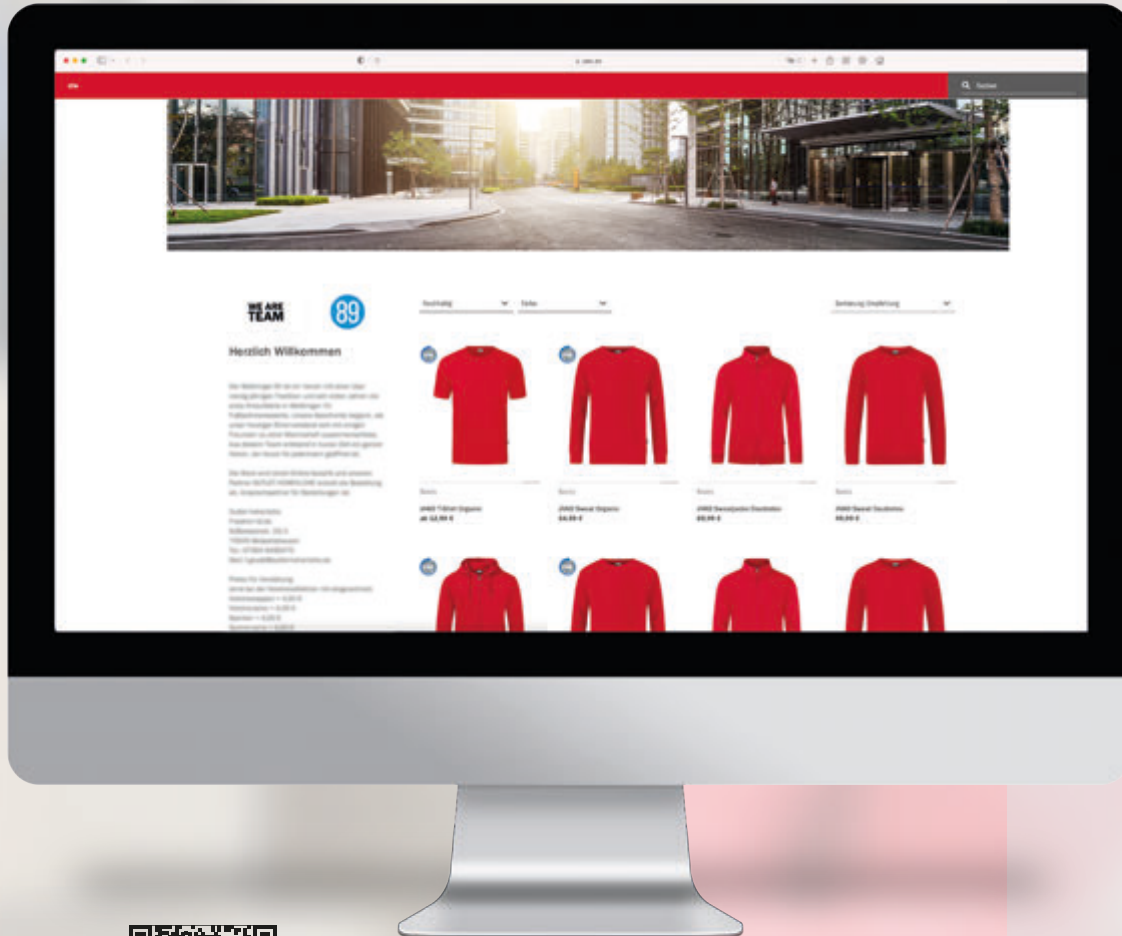
## THE ONLINE SHOP FOR YOUR TEAM!

Your own webshop with the individual collection for all teams at work and for leisure time? This is now possible with the JAKO Teamshops – more than 15.000 teams have already joined! Every team can easily present its JAKO collection in an individual web shop and buy it there directly. Design the Teamshop according to your demands, choose your articles and add the individual customization. Connect the Teamshop directly with your local retailer. Scan the QR code now for more information.

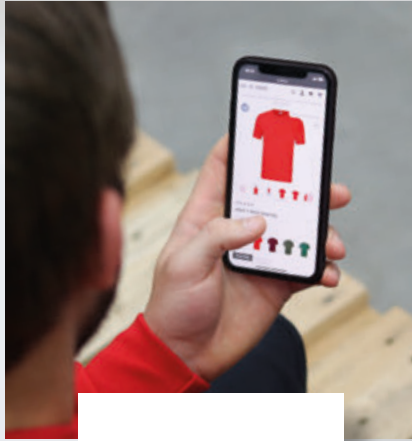
✓ Quick  
and simple

✓ Order  
online easily

✓ Individually  
for your team



DISCOVER NOW



01

OPEN  
TEAMSHOP



02

DESIGN  
LAYOUT



03

DEFINE YOUR  
TEAM COLLECTION



04

CONNECT  
SHOP

At [www.jako.de/en/teamshops-ctw](http://www.jako.de/en/teamshops-ctw) you can easily start with the individual Teamshop for your club. First of all, enter your contact details and the basic settings.

In the next step, the Teamshop can be personalised and adjusted to your team. Choose the colours of your team and add a logo and a cover picture.

Use the JAKO online shop to select the articles and colour variants that should be displayed in your shop. You can add logos and other customization directly via the button "Customizable".

**Optional:** Connect the Teamshop with your local JAKO partner and profit from numerous advantages!







# T-SHIRTS

Variety and quality. Our t-shirts convince in every respect. Various materials, high-quality workmanship and a wide range of colours ensure the perfect appearance.



Beate is 164 cm - Size 38  
Lukas is 190 cm - Size L  
Jessica is 161 cm - Size 36  
Christian is 180 cm - Size M



C6120

**T-SHIRT ORGANIC**

MEN & WOMEN

- 100 % cotton (organic)
- Col. 520: 90 % cotton (organic), 10 % viscose
- Cotton from controlled organic cultivation
- Single jersey
- 160 g/m<sup>2</sup>
- Washable at 60 °C
- Men: Ribbed round neck collar
- Women: Ribbed V-neck collar
- Reinforced shoulder seams
- Pre-shrunk
- JAKO size label in neck
- JAKO flag label on left side seam



S M L XL XXL 3XL 4XL 5XL

34 36 38 40 42 44 46 48



000  
white



100  
red



130  
maroon



240  
olive



260  
green



270  
lime



300  
citro



360  
orange



380  
sand



400  
royal



460  
ice blue



520  
light grey  
melange



800  
black



830  
anthracite



840  
stone grey



900  
seablue



Sebastian is 185 cm - Size M  
Yvonne is 167 cm - Size 40  
Lina is 167 cm - Size 36  
Nico is 176 cm - Size XL



C6121

**T-SHIRT ORGANIC STRETCH**

MEN & WOMEN

- 95 % cotton (organic), 5 % elastane
- Col. 520: 85 % cotton (organic), 10 % viscose, 5 % elastane
- Cotton from controlled organic cultivation
- Single jersey
- 170 g/m<sup>2</sup>
- Washable at 60 °C
- Men: Ribbed round neck collar
- Women: Feminine cut round neck
- Reinforced shoulder seams
- Pre-shrunk
- JAKO size label in neck
- JAKO flag label on left side seam



S M L XL XXL 3XL 4XL 5XL

34 36 38 40 42 44 46 48



000  
white



100  
red



240  
olive



400  
royal



520  
light grey  
melange



800  
black



830  
anthracite



840  
stone grey



900  
seablue



Mirjam is 174 cm - Size 40  
Marco is 180 cm - Size M  
Benedikt is 193 cm - Size L  
Anja is 168 cm - Size 36



C6130

**T-SHIRT DOUBLETEX**

MEN & WOMEN

- 55 % polyester, 45 % cotton
- DOUBLETEX single jersey
- VORTEX® yarn technology
- 180 g/m²
- Washable at 60 °C
- Industrial laundry according to DIN EN ISO 15797
- Ribbed round neck collar
- Sewn-on neck mirror
- Hanging straps in side seams
- Reinforced seams on shoulder and armhole
- Pre-shrunk
- JAKO size label in neck
- JAKO flag label on left side seam



S M L XL XXL 3XL 4XL 5XL  
 34 36 38 40 42 44 46 48



000  
white



100  
red



130  
maroon



260  
green



400  
royal



800  
black



830  
anthracite



900  
seablue



Lukas is 190 cm - Size L  
Beate is 164 cm - Size 38



6129

## T-SHIRT PREMIUM BASICS

MEN & WOMEN

- 92 % polyester, 8 % elastane
- Polyester stretch jersey
- 190 g/m<sup>2</sup>
- Washable at 30 °C
- Modern melange look
- Premium label
- JAKO logo in anthracite



S	M	L	XL	XXL	3XL	4XL
34	36	38	40	42	44	



01  
red melange



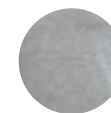
04  
royal melange



21  
anthracite melange



28  
khaki melange



40  
light grey melange



49  
seablue melange

Alisha is 173 cm - Size 36  
Daniel is 185 cm - Size L



6145

### T-SHIRT PRO CASUAL

MEN & WOMEN

- 90 % polyester (72 % recycled), 10 % elastane
- Polyester stretch jersey
- 170 g/m<sup>2</sup>
- Washable at 40 °C
- Tonal JAKO branding on right sleeve
- Soft touch
- Side seam slit
- Extended back
- Teamline label



S	M	L	XL	XXL	3XL
34	36	38	40	42	44



000  
white



141  
chili red



385  
beige



445  
smokey blue



800  
black



855  
ash grey



900  
seablue



Jasmin is 163 cm - Size 34  
Paul is 180 cm - Size M



6121

## T-SHIRT CHALLENGE

MEN & WOMEN

- 91 % polyester, 9 % elastane
- Polyester stretch jersey
- 170 g/m<sup>2</sup>
- Washable at 40 °C
- Side seam slit
- Modern melange look
- Contrast tape on shoulder
- Contrast tape on side
- Teamline label
- JAKO logo in contrast



S	M	L	XL	XXL	3XL	4XL
34	36	38	40	42	44	



**501**  
black melange  
white



**502**  
black melange  
red



**503**  
black melange  
sport green



**505**  
black melange  
citra



**506**  
black melange  
neon orange



**511**  
seablu melange  
royal



**512**  
seablu melange  
neon yellow



**513**  
seablu melange  
maroon



**521**  
light grey melange  
anthra light



**531**  
stone grey melange  
black

Mirjam is 174 cm - Size 40  
 Juan is 173 cm - Size M



4221

## T-SHIRT CHALLENGE

MEN & WOMEN

- 100 % polyester
- Polyester interlock
- 140 g/m<sup>2</sup>
- Washable at 40 °C
- Functional material mix
- Contrast insert on shoulder
- Contrast tape on side
- Back made of micro mesh
- JAKO logo in contrast



S	M	L	XL	XXL	3XL
34	36	38	40	42	44



**002**  
white  
anthra light



**101**  
red  
black



**132**  
maroon  
seablu



**201**  
sport reen  
black



**301**  
citro  
black



**351**  
neon orange  
black



**403**  
royal  
seablu



**443**  
JAKO blue  
neon yellow



**802**  
black  
white



**841**  
stone grey  
black



Christian is 180 cm - Size M  
Klara is 159 cm - Size 38



6175

## T-SHIRT RUN 2.0

MEN & WOMEN

- 100 % polyester (recycled)
- Polyester micro mesh
- 130 g/m<sup>2</sup>
- Washable at 40 °C
- Back made of micro mesh
- Material mix
- Flatlock seams
- JAKO logo in contrast



S M L XL XXL 3XL  
34 36 38 40 42 44 46 48



00

white



01

sport red



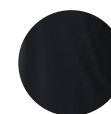
03

neon yellow



04

royal



08

black



19

neon orange



25

neon green



40

stone grey



51

pink



89

JAKO blue

Nico is 176 cm - Size XL  
Lina is 167 cm - Size 36



6160

## T-SHIRT PROMO

MEN & WOMEN

- 100 % cotton (organic)
- Col. 505, 506, 512:  
60 % cotton (organic), 40 % polyester (recycled)
- Col. 520: 90 % cotton (organic), 10 % viscose
- Cotton from controlled organic cultivation
- Single jersey
- 160 g/m<sup>2</sup>
- Washable at 40 °C
- Men: Ribbed round neck collar
- Women: Feminine cut round neck
- Pre-shrunk
- Large logo print on chest



S	M	L	XL	XXL	3XL	4XL
34	36	38	40	42	44	



000  
white



100  
red



151  
wine red  
neon orange



220  
soft green



231  
khaki  
neon green



400  
royal



440  
JAKO blue



505  
black melange  
citra



506  
black melange  
neon orange



512  
seablue melange  
neon yellow



520  
light grey  
melange



800  
black



840  
stone grey



907  
seablue  
indigo







# POLOS

Stylish, sporty and of high quality. Classic piqué or functional blended fabrics. We offer the right polo shirt for every purpose.





Anja is 168 cm - Size 36  
Mark is 189 cm - Size L  
Maja is 160 cm - Size 34  
Stefan is 179 cm - Size L



C6320

**POLO ORGANIC**

MEN & WOMEN

- 100 % cotton (organic)
- Col. 520: 90 % cotton (organic), 10 % viscose
- Cotton from controlled organic cultivation
- Piqué
- 200 g/m<sup>2</sup>
- Washable at 60 °C
- Ribbed polo collar
- Three-button placket
- Ribbed cuffs
- Reinforced shoulder seams
- Side seam slit
- Pre-shrunk
- JAKO size label in neck
- JAKO flag label on left side seam



S M L XL XXL 3XL 4XL 5XL

34 36 38 40 42 44 46 48



000  
white



100  
red



130  
maroon



240  
olive



260  
green



270  
lime



300  
citro



360  
orange



380  
sand



400  
royal



460  
ice blue



520  
light grey  
melange



800  
black



830  
anthracite



840  
stone grey



900  
seablue



Jessica is 161 cm - Size 36  
Klara is 159 cm - Size 38  
Andreas is 183 cm - Size L  
Lukas is 190 cm - Size L



C6121

**POLO ORGANIC STRETCH**

MEN & WOMEN

- 94 % cotton (organic), 6 % elastane
- Col. 520: 85 % cotton (organic), 10 % viscose, 5 % elastane
- Cotton from controlled organic cultivation
- Piqué
- 220 g/m<sup>2</sup>
- Washable at 60 °C
- Three-button placket
- Reinforced shoulder seams
- Side seam slit
- Pre-shrunk
- JAKO size label in neck
- JAKO flag label on left side seam



**S M L XL XXL 3XL 4XL 5XL**  
**34 36 38 40 42 44 46 48**



**000**  
white



**100**  
red



**240**  
olive



**400**  
royal



**520**  
light grey  
melange



**800**  
black



**830**  
anthracite



**840**  
stone grey



**900**  
seablu



Sebastian is 185 cm - Size M  
Paul is 180 cm - Size M  
Yvonne is 167 cm - Size 40



C6330

**POLO DOUBLETEX**

MEN & WOMEN

- 55 % cotton, 45 % polyester
- DOUBLETEX piqué
- VORTEX® yarn technology
- 200 g/m²
- Washable at 60 °C
- Industrial laundry according to DIN EN ISO 15797
- Three-button placket
- Sewn-on neck mirror
- Hanging straps in side seams
- Reinforced seams on shoulder and armhole
- Pre-shrunk
- JAKO size label in neck
- JAKO flag label on left side seam



S M L XL XXL 3XL 4XL 5XL  
 34 36 38 40 42 44 46 48



000  
white



100  
red



130  
maroon



260  
green



400  
royal



800  
black



830  
anthracite



900  
seablu



Jessica is 161 cm - Size 36  
Andreas is 183 cm - Size L



6329

## POLO PREMIUM BASICS

MEN & WOMEN

- 92 % polyester, 8 % elastane
- Polyester stretch jersey
- 190 g/m<sup>2</sup>
- Washable at 30 °C
- Modern polo collar made of upper material with button placket
- Modern melange look
- Sporty cut
- Side seam slit
- Premium label
- JAKO logo in anthracite



S	M	L	XL	XXL	3XL	4XL
34	36	38	40	42	44	



01  
red melange



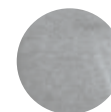
04  
royal melange



21  
anthracite melange



28  
khaki melange



40  
light grey melange



49  
seablue melange

Sergej is 186 cm - Size L  
Alisha is 173 cm - Size 36



6345

## POLO PRO CASUAL

MEN & WOMEN

- 90 % polyester (72 % recycled), 10 % elastane
- Polyester stretch jersey
- 170 g/m<sup>2</sup>
- Washable at 40 °C
- Zip with JAKO branding
- Tonal JAKO branding on right sleeve
- Soft touch
- Side seam slit
- Extended back
- Teamline label



S	M	L	XL	XXL	3XL	4XL
34	36	38	40	42	44	



000  
white



141  
chili red



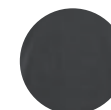
385  
beige



445  
smokey blue



800  
black



855  
ash grey



900  
seablue



Benedikt is 193 cm - Size L  
Anja is 168 cm - Size 36



6321

## POLO CHALLENGE

MEN & WOMEN

- 91 % polyester, 9 % elastane
- Polyester stretch jersey
- 170 g/m<sup>2</sup>
- Washable at 40 °C
- Side seam slit
- Modern melange look
- Contrast tape on shoulder
- Contrast tape on side
- Teamline label
- JAKO logo in contrast



S	M	L	XL	XXL	3XL	4XL
34	36	38	40	42	44	



**501**  
black melange  
white



**502**  
black melange  
red



**503**  
black melange  
sport green



**505**  
black melange  
citra



**506**  
black melange  
neon orange



**511**  
seablue melange  
royal



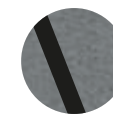
**512**  
seablue melange  
neon yellow



**513**  
seablue melange  
maroon



**521**  
light grey mel.  
antra light



**531**  
stone grey mel.  
black

Sebastian is 185 cm - Size M  
Jasmin is 163 cm - Size 34



6358

## POLO PRESTIGE

MEN & WOMEN

- 100 % polyester
- Polyester jacquard
- 148 g/m<sup>2</sup>
- Washable at 40 °C
- Modern stand-up collar
- Concealed button placket
- Side seam slit
- JAKO logo in main colour



XS S M L XL XXL 3XL 4XL

34 36 38 40 42 44 46 48



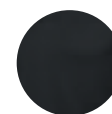
00  
white



01  
red



04  
royal



08  
black



18  
flame



32  
lemon



40  
stone grey



49  
seablue



89  
JAKO blue









# SWEATER & SWEAT JACKETS

The classic as a round neck, zip top or jacket. With or without a hood.

In terry, fleece or functional fabric. High quality workmanship,  
various colours and sizes. Our sweaters convince all along the line.



Andreas is 183 cm - Size L  
Jessica is 161 cm - Size S  
Lukas is 190 cm - Size L



**NEW**  
04|2024

C6420

## LONGSLEEVE ORGANIC

UNISEX

- 100 % cotton (organic)
- Cotton from controlled organic cultivation
- Single jersey
- 200 g/m<sup>2</sup>
- Washable at 60 °C
- Round neck collar with ribbed insert
- Reinforced shoulder seams
- JAKO size label in neck
- JAKO flag label on left side seam



XS S M L XL XXL 3XL 4XL 5XL



000  
white



100  
red



400  
royal



800  
black



830  
anthracite



900  
seablue



Lukas is 190 cm - Size L  
Christian is 180 cm - Size M  
Beate is 164 cm - Size M



C8820

## SWEATER ORGANIC

UNISEX

- 70 % cotton (organic), 30 % polyester (recycled)
- Col. 520: 65 % cotton (organic), 30 % polyester (recycled), 5 % viscose
- Cotton from controlled organic cultivation
- 300 g/m<sup>2</sup>
- Washable at 60 °C
- Sweater with softly roughened inside
- Ribbed round neck collar
- Ribbed waistband and cuffs
- Reinforced shoulder seams
- Reinforced seams at hem
- Pre-shrunk
- JAKO size label in neck
- JAKO flag label on left side seam



S M L XL XXL 3XL 4XL 5XL



000  
white



100  
red



260  
green



380  
sand



400  
royal



520  
light grey  
melange



800  
black



830  
anthracite



840  
stone grey



900  
seablue



Nico is 176 cm - Size XL  
Lina is 167 cm - Size S  
Paul is 180 cm - Size M



C8830

## SWEATER DOUBLETEX

UNISEX

- 56 % cotton, 44 % polyester
- DOUBLETEX french terry
- VORTEX® yarn technology
- 320 g/m<sup>2</sup>
- Washable at 60 °C
- Industrial laundry according to DIN EN ISO 15797
- Ribbed round neck collar
- Ribbed waistband and cuffs
- Sewn-on neck mirror
- Hanging straps in side seams
- Reinforced seams on shoulder and armhole
- Pre-shrunk
- JAKO size label in neck
- JAKO flag label on left side seam



S M L XL XXL 3XL 4XL 5XL



000  
white



100  
red



130  
maroon



260  
green



400  
royal



800  
black



830  
anthracite



900  
seablue



Marco is 180 cm - Size M  
Mark is 189 cm - Size L  
Mirjam is 174 cm - Size M  
Maja is 160 cm - Size S



C8620

## ZIP TOP ORGANIC

UNISEX

- 70 % cotton (organic), 30 % polyester (recycled)
- Col. 520: 65 % cotton (organic), 30 % polyester (recycled), 5 % viscose
- Cotton from controlled organic cultivation
- 300 g/m<sup>2</sup>
- Washable at 60 °C
- Sweater with softly roughened inside
- ¼ front zip
- Ribbed hem and cuffs
- Reinforced shoulder seams
- Reinforced seams at hem
- Pre-shrunk
- JAKO size label in neck
- JAKO flag label on left side seam



S M L XL XXL 3XL 4XL 5XL



100  
red



260  
green



380  
sand



400  
royal



520  
light grey  
melange



800  
black



830  
anthracite



840  
stone grey



900  
seablue



*Klara is 159 cm - Size S  
Lukas is 190 cm - Size L  
Jessica is 161 cm - Size S  
Andreas is 183 cm - Size L*



C8630

## ZIP TOP DOUBLETEX

UNISEX

- 56 % cotton, 44 % polyester
- DOUBLETEX french terry
- VORTEX® yarn technology
- 320 g/m<sup>2</sup>
- Washable at 60 °C
- Industrial laundry according to DIN EN ISO 15797
- ¼ front zip
- Ribbed hem and cuffs
- Sewn-on neck mirror
- Hanging straps in side seams
- Reinforced seams on shoulder and armhole
- Pre-shrunk
- JAKO size label in neck
- JAKO flag label on left side seam



S M L XL XXL 3XL 4XL 5XL



000  
white



100  
red



130  
maroon



260  
green



400  
royal



800  
black



830  
anthracite



900  
seablue



Jasmin is 163 cm - Size 34  
Sebastian is 185 cm - Size M  
Yvonne is 167 cm - Size 40



C9830

## SWEATER JACKET DOUBLETEX

MEN & WOMEN

- 56 % cotton, 44 % polyester
- DOUBLETEX french terry
- VORTEX® yarn technology
- 320 g/m<sup>2</sup>
- Washable at 60 °C
- Industrial laundry according to DIN EN ISO 15797
- Ribbed hem and cuffs
- Side pockets with zip
- Sewn-on neck mirror
- Hanging straps in side seams
- Reinforced seams on shoulder and armhole
- Pre-shrunk
- JAKO size label in neck
- JAKO flag label on left side seam



S M L XL XXL 3XL 4XL 5XL  
34 36 38 40 42 44 46 48



000  
white



100  
red



130  
maroon



260  
green



400  
royal



800  
black



830  
anthracite



900  
seablue

Stefan is 179 cm - Size L  
Maja is 160 cm - Size 34  
Juan is 173 cm - Size M





C6820

## HOODED JACKET ORGANIC

MEN & WOMEN

- 70 % cotton (organic), 30 % polyester (recycled)
- Col. 520: 65 % cotton (organic), 30 % polyester (recycled), 5 % viscose
- Cotton from controlled organic cultivation
- 300 g/m<sup>2</sup>
- Washable at 60 °C
- Sweater with softly roughened inside
- Hood with single jersey inside
- Cords with metal eyelets and metal ends
- Ribbed hem and cuffs
- Attached pockets
- Reinforced shoulder seams
- Reinforced seams at hem
- Pre-shrunk
- JAKO size label in neck
- JAKO flag label on left side seam



S M L XL XXL 3XL 4XL 5XL  
34 36 38 40 42 44 46 48



000  
white



100  
red



130  
maroon



240  
olive



260  
green



270  
lime



300  
citro



360  
orange



400  
royal



460  
ice blue



520  
light grey  
melange



800  
black



830  
anthracite



840  
stone grey



900  
seablue

Luca is 186 cm - Size L  
Inés is 173 cm - Size S  
Sophia is 167 cm - Size S  
Lukas is 180 cm - Size L



C6720

## HOODED SWEATER ORGANIC

UNISEX

- 70 % cotton (organic), 30 % polyester (recycled)
- Col. 520: 65 % cotton (organic), 30 % polyester (recycled), 5 % viscose
- Cotton from controlled organic cultivation
- 300 g/m<sup>2</sup>
- Washable at 60 °C
- Sweater with softly roughened inside
- Hood with single jersey inside
- Cords with metal eyelets and metal ends
- Ribbed hem and cuffs
- Attached pocket
- Reinforced shoulder seams
- Reinforced seams at hem
- Pre-shrunk
- JAKO size label in neck
- JAKO flag label on left side seam



S M L XL XXL 3XL 4XL 5XL



000  
white



100  
red



130  
maroon



240  
olive



260  
green



380  
sand



400  
royal



520  
light grey  
melange



800  
black



830  
anthracite



840  
stone grey



900  
seablue



Lina is 167 cm - Size 36  
Paul is 180 cm - Size M



6745

## ZIP HOODIE PRO CASUAL

MEN & WOMEN **NEW**

- 77 % polyester (46 % recycled), 18 % viscose, 5 % elastane
- Soft doubleface polyester
- 300 g/m<sup>2</sup>
- Washable at 40 °C
- Zip with JAKO branding
- Attached pocket
- Additional side pocket with concealed zip
- Sporty cut
- Soft touch
- Teamline label
- Tonal JAKO branding on right sleeve



S	M	L	XL	XXL	3XL
34	36	38	40	42	44



000  
white



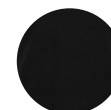
141  
chili red



385  
beige



445  
smokey  
blue



800  
black



855  
ash grey



900  
seablue

Timo is 188 cm - Size L  
Alisha is 173 cm - Size 36



9845

## JACKET PRO CASUAL

MEN & WOMEN

- 77 % polyester (46 % recycled), 18 % viscose, 5 % elastane
- Soft doubleface polyester
- 300 g/m<sup>2</sup>
- Washable at 40 °C
- Zip with JAKO branding
- Side pockets
- Additional side pocket with concealed zip
- Sporty cut
- Soft touch
- Teamline label
- Tonal JAKO branding on right sleeve



S	M	L	XL	XXL	3XL	4XL
34	36	38	40	42	44	



000  
white



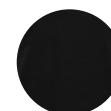
141  
chili red



385  
beige



445  
smokey  
blue



800  
black



855  
ash grey



900  
seablu

Benedikt is 193 cm - Size L  
Maja is 160 cm - Size 34



6729

## HOODED SWEATER PREMIUM BASICS

MEN & WOMEN

- 81 % polyester, 14 % viscose, 5 % elastane
- Double tech knit
- 320 g/m<sup>2</sup>
- Washable at 40 °C
- Modern melange look
- Hood with drawcord
- Sporty cut
- Side pockets
- Cotton touch
- Inside made of breathable interlock
- Premium label
- JAKO logo in anthracite



S	M	L	XL	XXL	3XL	4XL
34	36	38	40	42	44	



01  
red melange



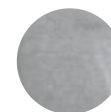
04  
royal melange



21  
anthracite melange



28  
khaki melange



40  
light grey melange



49  
seablue melange



Christian is 180 cm - Size M  
Klara is 159 cm - Size 38



6829

## HOODED JACKET PREMIUM BASICS

MEN & WOMEN

- 81 % polyester, 14 % viscose, 5 % elastane
- Double tech knit
- 320 g/m<sup>2</sup>
- Washable at 40 °C
- Modern melange look
- Hood with drawcord
- Sporty cut
- Side pockets
- Cotton touch
- Inside made of breathable interlock
- Premium label
- JAKO logo in anthracite



S	M	L	XL	XXL	3XL	4XL
34	36	38	40	42	44	



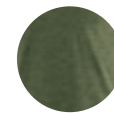
01  
red melange



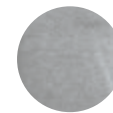
04  
royal melange



21  
anthracite melange



28  
khaki melange



40  
light grey melange



49  
seablue melange

Lina is 167 cm - Size 36  
Nico is 176 cm - Size XL



9821

## LEISURE JACKET CHALLENGE WITH HOOD

MEN & WOMEN

- 100 % polyester
- Double knit polyester
- 335 g/m<sup>2</sup>
- Washable at 40 °C
- Modern melange look
- Side pockets with concealed zip
- Contrast tape on shoulder
- Contrast tape on side
- Extended back
- Teamline label
- JAKO logo in contrast



34	36	38	40	42	44	
S	M	L	XL	XXL	3XL	4XL



**501**  
black melange  
white



**502**  
black melange  
red



**503**  
black melange  
sport green



**505**  
black melange  
citra



**506**  
black melange  
neon orange



**511**  
seablue melange  
royal



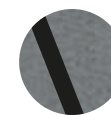
**512**  
seablue melange  
neon yellow



**513**  
seablue melange  
maroon



**521**  
light grey mel.  
antra light



**531**  
stone grey mel.  
black

Mark is 189 cm - Size L  
Mirjam is 174 cm - Size 40



6475

### LONGSLEEVE RUN 2.0 MEN & WOMEN

- 100 % polyester (recycled)
- Polyester micro mesh
- 130 g/m<sup>2</sup>
- Washable at 40 °C
- Round neck collar
- Back made of micro mesh
- Flatlock seams
- JAKO logo in contrast



S	M	L	XL	XXL	3XL
34	36	38	40	44	48



00  
white



01  
sport red



03  
neon yellow



04  
royal



08  
black



19  
neon orange



25  
neon green



40  
stone grey



51  
pink



89  
JAKO blue









# JACKETS & VESTS

Stylish vests, hybrid jackets, quilted jackets, softshell and fleece jackets. Our range of jackets always offers the right article. Highest quality, convenient details and modern design in all styles.

Timo is 188 cm - Size L  
Alisha is 173 cm - Size 36



7007

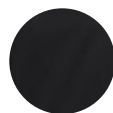
## SOFTSHELL VEST PREMIUM

MEN & WOMEN

- 100 % polyester
- 5000 mm PU, 5000 g/m<sup>2</sup>/24h
- Washable at 30 °C
- Wind and water-repellent outer material
- Soft fleece on inner side
- Side pockets with zip
- Chest pocket with zip
- Practical inner pocket with zip
- Extended back
- JAKO logo in tonal contrast
- Changeable zipper hangers in 9 colours (C1100, p. 112)



S	M	L	XL	XXL	3XL	4XL	5XL
34	36	38	40	42	44	46	



800  
black



840  
stone grey



900  
seablue



Hannah is 172 cm - Size 36  
Sergej is 186 cm - Size L



7607

## SOFTSHELL JACKET PREMIUM

MEN & WOMEN

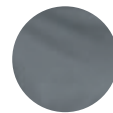
- 100 % polyester
- 5000 mm PU, 5000 g/m<sup>2</sup>/24h
- Washable at 30 °C
- Wind and water-repellent outer material
- Soft fleece on inner side
- Side pockets with zip
- Chest pocket with zip
- Practical inner pocket with zip
- Extended back
- Hood with drawcord and stopper
- JAKO logo in tonal contrast
- Changeable zipper hangers in 9 colours (C1100, p. 112)



S	M	L	XL	XXL	3XL	4XL	5XL
34	36	38	40	42	44	46	



800  
black



840  
stone grey



900  
seablue



Mirjam is 174 cm - Size 40  
Stefan is 179 cm - Size L



7604

## SOFTSHELL JACKET TEAM

MEN & WOMEN

- Outer material: 92 % polyester, 8 % elastane
- 12000 mm PU, 6000 g/m<sup>2</sup>/24h
- Washable at 40 °C
- Wind and water-repellent outer material
- Soft fleece on inside
- Side pockets with zip
- JAKO logo in black
- Changeable zipper hangers in 9 colours (C1100, p. 112)



S	M	L	XL	XXL	3XL	4XL
34	36	38	40	42	44	



04  
royal



08  
black



11  
chili red



22  
soft green



99  
seablue

Andreas is 183 cm - Size L  
Jessica is 161 cm - Size 36



7605

## SOFTSHELL JACKET LIGHT

MEN & WOMEN

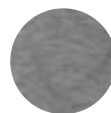
- Outer material: 100 % polyester
- 5000 mm PU, 5000 g/m<sup>2</sup>/24h
- Washable at 30 °C
- Wind and water-repellent outer material
- Hem with elastic binding
- Side pockets with zip
- Chest pocket with zip
- Hood with drawcord and stopper
- JAKO logo in silver
- Changeable zipper hangers in 9 colours (C1100, p. 112)



S	M	L	XL	XXL	3XL
34	36	38	40	42	44



08  
black



40  
grey melange





Jasmin is 163 cm - Size 34  
Sebastian is 185 cm - Size M



C7005

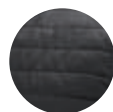
### QUILTED VEST CORPORATE

MEN & WOMEN

- Outer material: 100 % nylon
- Padding: 100 % polyester
- Side inserts: 90 % polyester, 10 % elastane
- Washable at 30 °C
- Heat insulating padding
- Sides with highly elastic functional material
- Armhole with binding
- Hem with binding
- Side pockets with zip
- JAKO logo in neck
- Changeable zipper hangers in 9 colours (C1100, p. 112)

XS S M L XL XXL 3XL 4XL 5XL

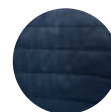
34 36 38 40 42 44 46



800  
black



840  
stone grey



900  
seablue

Marco is 180 cm - Size M  
Anja is 168 cm - Size 36



C7004

## HYBRID JACKET CORPORATE

MEN & WOMEN

- Outer material: 100 % nylon
- Padding: 100 % polyester
- Sleeve and side inserts:  
90 % polyester, 10 % elastane
- Washable at 30 °C
- Heat insulating padding
- Hem and sleeves with binding
- Side pockets with zip
- JAKO logo in tonal contrast
- Changeable zipper hangers in 9 colours  
(C1100, p. 112)

XS	S	M	L	XL	XXL	3XL	4XL	5XL
34	36	38	40	42	44	46		



800  
black



840  
stone grey



900  
seablue

Mike is 183 cm - Size L  
Klara is 159 cm - Size 38



7204

## QUILTED JACKET

MEN & WOMEN

- Outer material: 100 % nylon
- Padding: 100 % polyester
- Lining: 100 % nylon
- Washable at 30 °C
- Ultralight
- Heat insulating padding
- Hem and sleeves with binding
- Side pockets with zip
- Padded hood
- Low packing volume
- Bag for stowing
- JAKO logo in main colour
- Changeable zipper hangers in 9 colours (C1100, p. 112)

KIDS

S	M	L	XL	XXL	3XL	4XL
34	36	38	40	42	44	



08  
black



99  
seablue



Gerhard is 182 cm - Size XL  
Jessy is 164 cm - Size 36



7703

## FLEECE JACKET

MEN & WOMEN

- 100 % polyester
- Micro fleece
- 165 g/m<sup>2</sup>
- Washable at 40 °C
- Side pockets with zip
- Zips in tonal contrast
- JAKO logo in tonal contrast

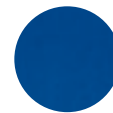
S M L XL XXL 3XL 4XL 5XL  
34 36 38 40 42 44 46 48



**103**  
red  
wine red



**262**  
green  
sport green



**402**  
royal  
seablue



**801**  
black  
anthracite



**831**  
anthracite  
black



**906**  
seablue  
dark blue







# TROUSERS

In order to be able to equip even more teams with Corporate Teamwear, we have extended the collection with the leisure trousers CASUAL, the function trousers WORK, SOFTSHELL TROUSERS and other matching trousers.



Florian is 182 cm - Size L  
Hannah is 172 cm - Size 36



C8510

## FUNCTION SHORTS WORK

MEN & WOMEN

- 90 % polyamide, 10 % elastane
- Made from elastic, durable and breathable 4 way stretch material
- 175 g/m<sup>2</sup> main material, 197 g/m<sup>2</sup> insert material
- Washable at 40 °C
- Ergonomic cut
- Slip pockets for metre stick or pens
- Side pockets with zip
- Mobile phone pocket with velcro closure
- Back pocket with velcro closure
- Reflective inserts
- Waistband with press button, hook and zip
- Belt loops
- JAKO flag label on back seam

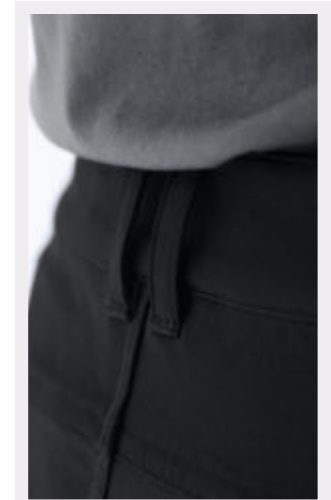
S M L XL XXL 3XL 4XL 5XL  
34 36 38 40 42 44 46 48



Slip pockets for metre stick or pens



Waistband with press button,  
hook and zip



Belt loops

Timo is 188 cm - Size L  
Caro is 170 cm - Size 36



C8410

## FUNCTION TROUSERS WORK

MEN & WOMEN

- 90 % polyamide, 10 % elastane
- Made from elastic, durable and breathable 4 way stretch material
- 175 g/m<sup>2</sup> main material, 197 g/m<sup>2</sup> insert material
- Washable at 40 °C
- Ergonomic cut
- Slip pockets for metre stick or pens
- Side pockets with zip
- Mobile phone pocket with velcro closure
- Back pocket with velcro closure
- Reflective inserts
- Waistband with press button, hook and zip
- Belt loops
- Hem with zip
- JAKO flag label on back seam

S M L XL XXL 3XL 4XL 5XL  
34 36 38 40 42 44 46 48

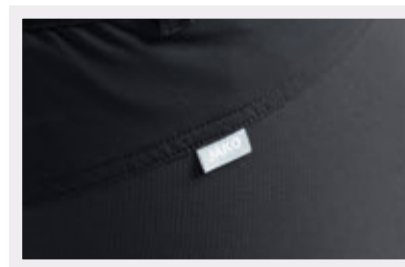
Short sizes men

24 25 26 27 28 29 30

Short sizes women

18 19 20 21 22 23

800  
black



JAKO flag label on back seam



Hem with zip



Mobile phone pocket with velcro closure

Daniel is 185 cm - Size L  
Hannah is 172 cm - Size 36



C6240  
**SHORTS CASUAL**  
MEN & WOMEN

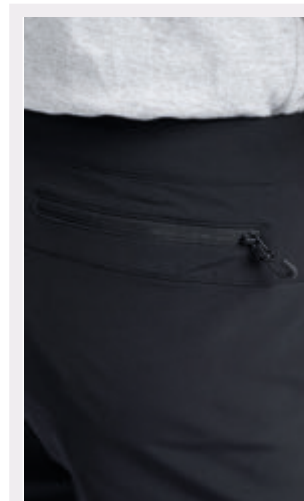
- 90 % polyester (recycled), 10 % elastane
- Polyester dobby
- 155 g/m<sup>2</sup>
- Washable at 40 °C
- Side pockets
- Waistband with press button and zip
- Belt loops
- Zip pocket on the back
- JAKO flag label on the back seam



S	M	L	XL	XXL	3XL	4XL
34	36	38	40	42	44	



Waistband with press button  
and zip



Zip pocket on the back



Polyester dobby



Alisha is 173 cm - Size 36  
Florian is 182 cm - Size L



C6540

## LEISURE TROUSERS CASUAL

MEN & WOMEN

- 90 % polyester (recycled), 10 % elastane
- Polyester dobby
- 155 g/m<sup>2</sup>
- Washable at 40 °C
- Side pockets
- Waistband with press button and zip
- Belt loops
- Zip pocket on the back
- Hem with elastic inserts
- Modern cut in ankle length
- JAKO flag label on the back seam



S M L XL XXL 3XL 4XL

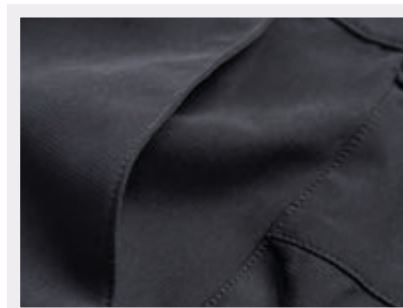
34 36 38 40 42 44

Short sizes men

24 25 26 27 28 29 30

Short sizes women

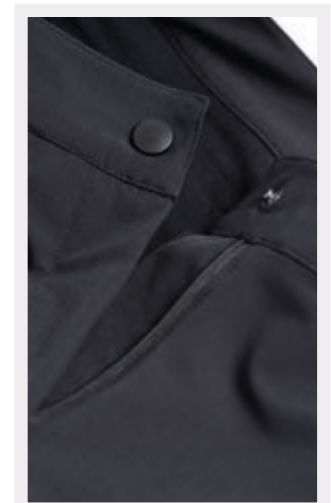
18 19 20 21 22 23



Open side pocket



Hem with elastic inserts



Waistband with press button and zip

Alisha is 173 cm - Size 36  
Daniel is 185 cm - Size L



6523

## LEISURE TROUSERS POWER

MEN & WOMEN

- 100 % polyester (recycled)
- Stretch micro twill
- 117 g/m<sup>2</sup>
- Washable at 40 °C
- Side insert in honeycomb structure
- Elastic material without lining
- Side pockets
- Additional side pocket with concealed zip
- Hem with elastic inserts
- Elastic waistband with drawcord and JAKO branding
- Modern cut in ankle length



S	M	L	XL	XXL	3XL	4XL
34	36	38	40	42	44	



000  
white



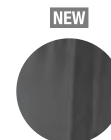
105  
red  
white



800  
black



802  
black  
white



820  
anthra light



900  
seablue

Sergej is 186 cm - Size L  
Hannah is 172 cm - Size 36



C7507

## SOFTSHELL TROUSERS

MEN & WOMEN

- 100 % polyester
- 8000 mm PU, 5000 g/m<sup>2</sup>/24h
- 220 g/m<sup>2</sup>
- Washable at 30 °C
- Wind and water-repellent outer material
- Soft fleece on inner side
- Side pockets with zip
- Elastic waistband with zip and button
- Hem with zip

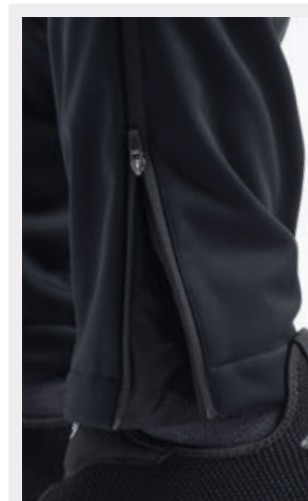


S	M	L	XL	XXL	3XL
34	36	38	40	42	44

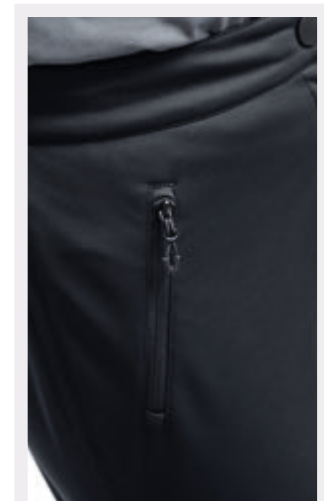
800  
black



Soft fleece on inner side



Hem with zip



Side pockets with zip



Sergej is 186 cm - Size L  
Timo is 188 cm - Size L



6245

## SHORTS PRO CASUAL

UNISEX

- 77 % polyester (46 % recycled), 18 % viscose  
5 % elastane
- Soft doubleface polyester
- 300 g/m<sup>2</sup>
- Washable at 40 °C
- Side pocket with zip and JAKO branding
- Sporty cut
- Soft touch



S M L XL XXL 3XL 4XL



800  
black



855  
ash grey



900  
seablue

Caro is 170 cm - Size 36  
Florian is 182 cm - Size L



6545

### JOGGING TROUSERS PRO CASUAL MEN & WOMEN

- 77 % polyester (46 % recycled), 18 % viscose  
5 % elastane
- Soft doubleface polyester
- 300 g/m<sup>2</sup>
- Washable at 40 °C
- Side pocket with zip and JAKO branding
- Sporty cut
- Soft touch



S	M	L	XL	XXL	3XL
34	36	38	40	42	44



800  
black



855  
ash grey



900  
seablue

Alisha is 173 cm - Size 36  
Timo is 188 cm - Size L



8529

## SHORTS PREMIUM BASICS

MEN & WOMEN

- 81 % polyester, 14 % viscose, 5 % elastane
- Double tech knit
- 320 g/m<sup>2</sup>
- Washable at 40 °C
- Modern melange look
- Side pockets with zip
- Elastic waistband with drawcord
- Cotton touch
- Inner side of breathable interlock
- JAKO logo in anthracite
- Premium label



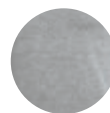
S	M	L	XL	XXL	3XL	4XL
34	36	38	40	42	44	



21  
anthracite melange



28  
khaki melange



40  
light grey melange



49  
seablue melange



Daniel is 185 cm - Size L  
Caro is 170 cm - Size 36



8429

## JOGGING TROUSERS PREMIUM BASICS

MEN & WOMEN

- 81 % polyester, 14 % viscose, 5 % elastane
- Double tech knit
- 320 g/m<sup>2</sup>
- Washable at 40 °C
- Modern melange look
- Side pockets with zip
- Elastic waistband with drawcord
- Cotton touch
- Inner side of breathable interlock
- JAKO logo in anthracite
- Premium label



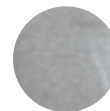
S	M	L	XL	XXL	3XL	4XL
34	36	38	40	42	44	



21  
anthracite melange



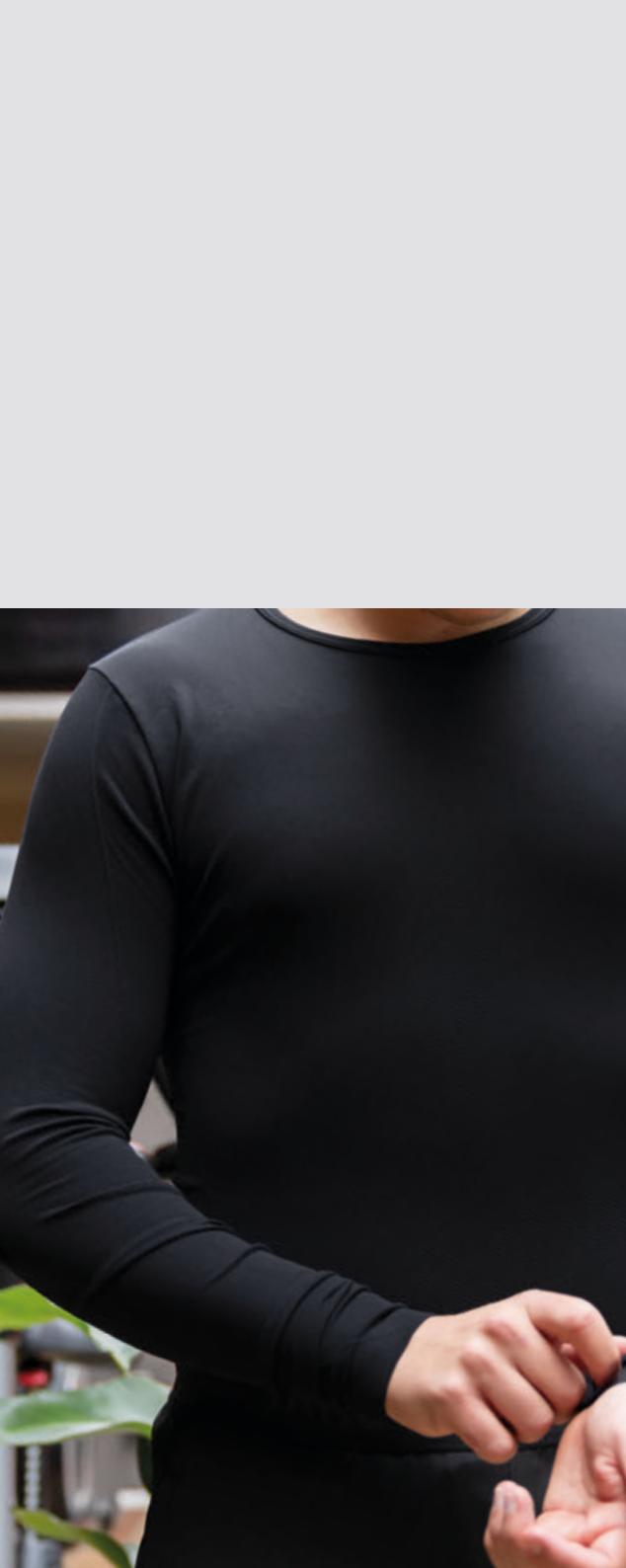
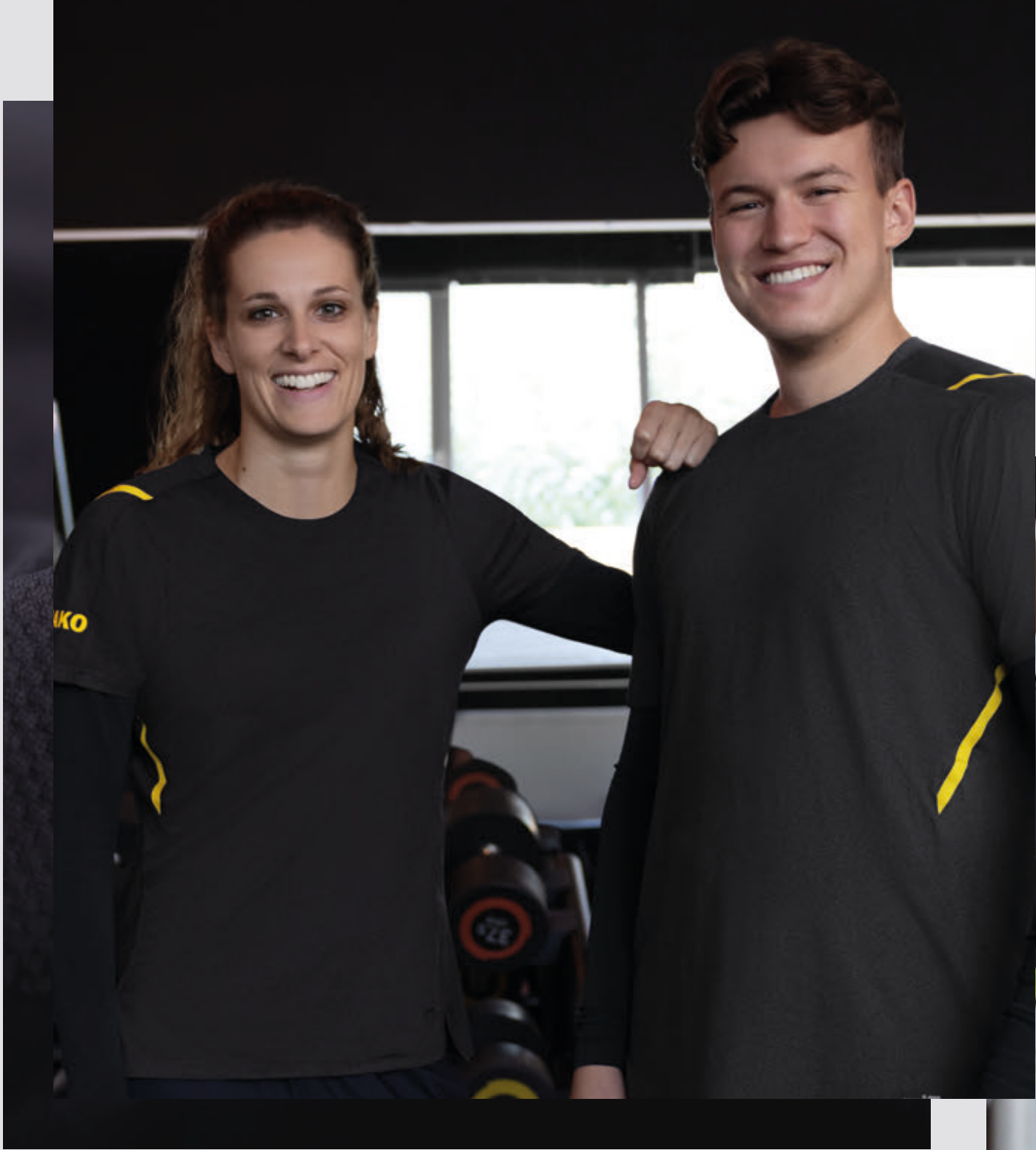
28  
khaki melange



40  
light grey melange



49  
seablue melange





# UNDERWEAR

Comfort meets functionality. With our functional underwear, we combine a particularly comfortable feel with ideal moisture regulation. Ideal for sport, leisure and work.



Juan is 173 cm - Size M  
Maja is 160 cm - Size XS



C6159

## T-SHIRT SKINBALANCE 2.0

UNISEX

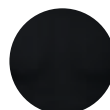
- 100 % polyamide
- Circular knit
- Washable at 40 °C
- Round neck collar
- Seamless
- Soft touch



XS S M L XL XXL 3XL



000  
white



800  
black

Lukas is 190 cm - Size L  
Lina is 167 cm - Size S



C6459

## LONGSLEEVE SKINBALANCE 2.0

UNISEX

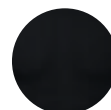
- 100 % polyamide
- Circular knit
- Washable at 40 °C
- Round neck collar
- Seamless
- Soft touch



XS S M L XL XXL 3XL



000  
white



800  
black

Lina is 167 cm - Size S  
Paul is 180 cm - Size M  
Jasmin is 163 cm - Size XS  
Sebastian is 185 cm - Size M





C6959

**TURTLENECK SKINBALANCE 2.0**

UNISEX

- 100 % polyamide
- Circular knit
- Washable at 40 °C
- Small round stand-up collar
- Seamless
- Soft touch



XS S M L XL XXL 3XL



000  
white



800  
black







# KIDS

Only the best, even for the little ones.  
To make sure also the youngsters are professionally equipped.  
Our selection of the most popular items in children's sizes,  
in proven quality and in many colours.



*Felix is 106 cm - Size 116  
Melina is 108 cm - Size 116  
Luka is 140 cm - Size 152  
Anny is 132 cm - Size 128*



C6120

## T-SHIRT ORGANIC

- 100 % cotton (organic)
- Col. 520: 90 % cotton (organic), 10 % viscose
- Cotton from controlled organic cultivation
- Single jersey
- 160 g/m<sup>2</sup>
- Washable at 60 °C
- Ribbed round neck collar
- Reinforced shoulder seams
- Pre-shrunk
- JAKO size label in neck
- JAKO flag label on left side seam



116 128 140 152 164



000  
white



100  
red



130  
maroon



240  
olive



260  
green



270  
lime



300  
citro



360  
orange



380  
sand



400  
royal



460  
ice blue



520  
light grey  
melange



800  
black



830  
anthracite



840  
stone grey



900  
seablue

Amelie is 124 cm - Size 128  
Leon is 122 cm - Size 128  
Melina is 108 cm - Size 116  
Luka is 140 cm - Size 152





C6320

**POLO ORGANIC**

- 100 % cotton (organic)
- Col. 520: 90 % cotton (organic), 10 % viscose
- Cotton from controlled organic cultivation
- Piqué
- 200 g/m<sup>2</sup>
- Washable at 60 °C
- Ribbed polo collar
- Three-button placket
- Ribbed cuffs
- Reinforced shoulder seams
- Side seam slit
- Pre-shrunk
- JAKO size label in neck
- JAKO flag label on left side seam



116 128 140 152 164



000  
white



100  
red



130  
maroon



240  
olive



240  
olive



270  
lime



300  
citro



360  
orange



380  
sand



400  
royal



460  
ice blue



520  
light grey  
melange



800  
black



830  
anthracite



840  
stone grey



900  
seablue

Leon is 122 cm - Size 128  
 Amelie is 124 cm - Size 128



6160

### T-SHIRT PROMO

- 100 % cotton (organic)
- Col. 505, 506, 512:  
60 % cotton (organic), 40 % polyester (recycled)
- Col. 520: 90 % cotton (organic), 10 % viscose
- Cotton from controlled organic cultivation
- Single jersey
- 160 g/m<sup>2</sup>
- Washable at 40 °C
- Ribbed round neck collar
- Pre-shrunk
- Large logo print on chest



116 128 140 152 164



Anny is 132 cm - Size 128  
Luka is 140 cm - Size 152



6175

### T-SHIRT RUN 2.0

- 100 % polyester (recycled)
- Polyester micro mesh
- 130 g/m<sup>2</sup>
- Washable at 40 °C
- Back made of micro mesh
- Flatlock seams
- Material mix
- JAKO logo in contrast



128

140

152

164



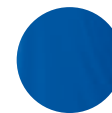
00  
white



01  
sport red



03  
neon yellow



04  
royal



08  
black



19  
neon orange



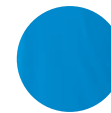
25  
neon green



40  
stone grey



51  
pink



89  
JAKO blue



Anny is 132 cm - Size 128  
Luka is 140 cm - Size 152  
Felix is 106 cm - Size 116  
Melina is 108 cm - Size 116



C6720

### HOODED SWEATER ORGANIC

- 70 % cotton (organic), 30 % polyester (recycled)
- Col. 520: 65 % cotton (organic), 30 % polyester (recycled), 5 % viscose
- Cotton from controlled organic cultivation
- 300 g/m<sup>2</sup>
- Washable at 60 °C
- Sweater with softly roughened inside
- Hood with single jersey inside
- Without drawcord
- Ribbed waistband and cuffs
- Attached pocket
- Reinforced shoulder seams
- Reinforced seams on hem
- Pre-shrunk
- JAKO size label in neck
- JAKO flag label on left side seam



116 128 140 152 164



000  
white



100  
red



130  
maroon



240  
olive



260  
green



380  
sand



400  
royal



520  
light grey  
melange



800  
black



830  
anthracite



840  
stone grey



900  
seablue

Amelie is 124 cm - Size 128  
Leon is 122 cm - Size 128



7604

### SOFTSHELL JACKET TEAM

- Outer material: 92 % polyester, 8 % elastane
- 12000 mm PU, 6000 g/m<sup>2</sup>/24h
- Washable at 40 °C
- Wind and water-repellent outer material
- Soft fleece on inside
- Side pockets with zip
- JAKO logo in black
- Changeable zipper hangers in 9 colours (C1100, p. 112)



128

140

152

164



04  
royal



08  
black



11  
chili red



22  
soft green



99  
seablue



Leon is 122 cm - Size 128  
Anny is 132 cm - Size 128



7204

### QUILTED JACKET

- Outer material: 100 % nylon
- Padding: 100 % polyester
- Lining: 100 % nylon
- Washable at 30 °C
- Ultralight
- Heat-insulating padding
- Hem and cuffs with binding
- Side pockets with zip
- Padded hood
- Low packing volume
- Bag for stowing
- JAKO logo in main colour
- Changeable zipper hangers in 9 colours (C1100, p. 112)

128

140

152

164



08  
black



99  
seablue







# ACCESSORIES

Bags, socks or the matching caps. Our accessories meet the highest demands and are the ideal companions.

The perfect addition to any team outfit.





1921

### SPORTS BAG CHALLENGE

- 100 % polyester
- Polyester 600 D
- Spacious main compartment
- Allround two-way zip
- Zip compartment on left side
- Deep wet compartment with zip
- Key pocket with zip
- Size adjustable, removable shoulder strap
- JAKO logo in contrast

**Size M Junior** approx. 55 litres  
60 x 29 x 31 cm (L x W x H)

**Size L Senior** approx. 82 litres  
71 x 32 x 36 cm (L x W x H)



**500**  
black  
melange



**510**  
seablue  
melange



**520**  
light grey  
melange



**530**  
stone grey  
melange

1821

### BACKPACK CHALLENGE

- 100 % polyester
- Polyester 600 D
- Spacious main compartment
- Allround two-way-zip
- Small inner pocket with zip
- Padded shoulder straps
- Separate, 10 cm high base compartment
- JAKO logo in contrast

Size approx. 30 litres



**500**  
black  
melange



**510**  
seablu  
melange



**520**  
light grey  
melange



**530**  
stone grey  
melange

1721

### PERSONAL BAG CHALLENGE

- 100 % polyester
- Polyester 600 D
- Main compartment with two-way zip
- Separate outer compartment with zip
- With strap for hanging when open
- Two inner pockets
- JAKO logo in contrast

Size 25 x 10 x 21 cm (L x W x H)



**500**  
black  
melange



**510**  
seablu  
melange



**520**  
light grey  
melange



**530**  
stone grey  
melange



800  
black



**C1900**  
**SPORTS BAG WITH SIDE WET COMPARTMENT**

- 100 % polyester
- Polyester 600 D
- Spacious main compartment with allround two-way zip
- Zip compartment on left side
- Deep wet compartment with zip on right side
- Small inner pocket with zip in main compartment
- Adjustable, removable shoulder strap
- JAKO logo in main colour

**Size** approx. 60 litres

800  
black



**C1700**  
**GYM BAG**

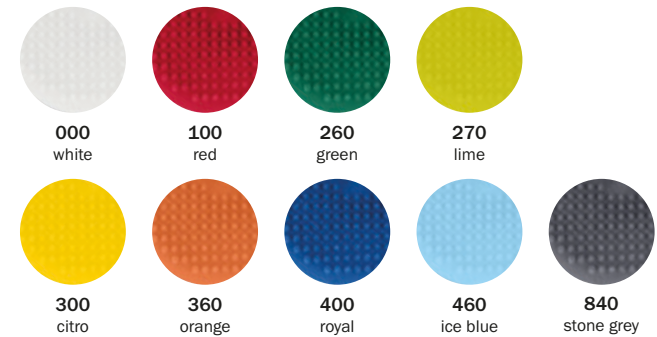
- 100 % polyester
- Polyester 600 D
- Carried over shoulder with cords
- JAKO logo in main colour

**Size** 47 x 38 cm (L x W)



**C1100**  
**JAKO ZIPPER HANGER**

- 100 % polyester
- For customizing jackets or vests
- Set of 12 zipper hangers







Back view

**NEW**  
03|2024

1280

**CAP CLUB**

- 50 % cotton (recycled), 50 % cotton
- Mesh insert: 100 % polyester (recycled)
- Size adjustable clip closure



Senior 2



001  
white  
black

142  
chili red  
black

800  
black



Back view

**NEW**  
03|2024

1281

**CAP FUNCTION**

- 100 % polyester (recycled)
- Size adjustable with velcro fastener
- JAKO logo in contrast



Senior 2



001  
white  
black

800  
black

917  
seablu  
black



Back view

**NEW**  
03|2024

1282

**CAP BASIC**

- 100 % polyester (recycled)
- Size adjustable clip closure



Senior 2



000  
white

141  
chili red

800  
black

900  
seablu

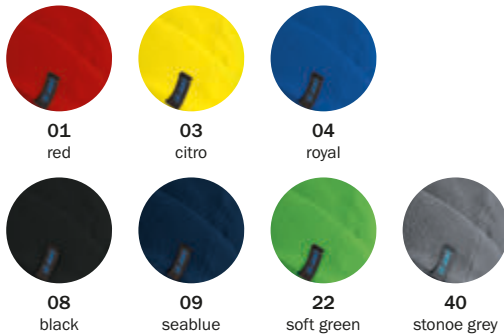
1224

**FLEECE CAP**

- 100 % polyester
- Micro fleece
- Quick drying and breathable
- JAKO logo in contrast



Junior 1 | Senior 2



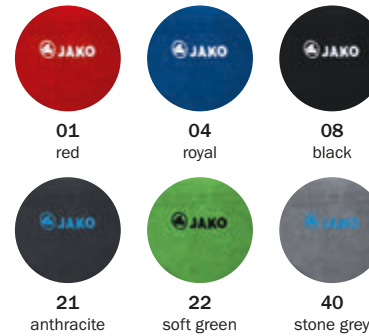
1292

**NECK WARMER**

- 100 % polyester
- Micro fleece
- Quick drying and breathable
- JAKO logo in contrast



Unisex 0



1293

**NECK WARMER WITH CAP**

- 100 % polyester
- Micro fleece
- Quick drying and breathable
- Integrated hood in collar
- JAKO logo in contrast



08  
black

Junior 1 | Senior 2

1294

**NECK WARMER FUNCTION**

- 87 % polyester, 13 % elastane
- Inside brushed
- Quick drying and breathable
- Good hold due to flexible fit
- Reflective prints
- JAKO logo in contrast



08  
black

Unisex 0



3941

**SOCK LINERS BASIC 3-PACK**

- 67 % cotton, 19 % polyester, 13 % polyamide, 1 % elastane
- Short comfort cuff
- Flat toe seam

3 (35-38) 4 (39-42) 5 (43-46) 6 (47-50)



3942

**LEISURE SOCKS SHORT 3-PACK**

- 66 % cotton, 21 % polyester, 11 % polyamide, 2 % elastane
- Short comfort cuff
- Flat toe seam

3 (35-38) 4 (39-42) 5 (43-46) 6 (47-50)



3943

**SPORTS SOCKS SHORT 3-PACK**

- 75 % cotton, 24 % polyester, 1 % elastane
- Comfort cuff
- Flat toe seam
- Cushioned heel and toe area

3 (35-38) 4 (39-42) 5 (43-46) 6 (47-50)



3944

**SPORTS SOCKS LONG 3-PACK**

- 75 % cotton, 24 % polyester, 1 % elastane
- Comfort cuff
- Flat toe seam
- Cushioned heel and toe area

3 (35-38) 4 (39-42) 5 (43-46) 6 (47-50)



728  
white



5804

### LEISURE SHOE STADIUM

- Fast-drying material through Fast-Dry Lining technology

36, 37, 38, 39, 40, 41, 42, 43, 44, 45, 46, 47

802  
black  
white



**NEW**  
02|2024

5619

### RUNNING SHOE PREMIUM RUN II

- Fast-drying material through Fast-Dry Lining technology
- Breathable mesh inserts
- ShockAbsorb EVA midsole with optimal damping characteristics
- Outsole with optimal traction
- Breathable, cushioning and dimensionally stable insoles
- Insole is washable

36, 37, 38, 39, 40, 41, 42, 43, 44, 45, 46, 47



723 charcoal

724 ultimate grey

906 seablue darkblue



004 white red

005 white royal

728 white

729 jet black



726 fiery red

729 jetz black

733 dk navy

5912  
**SNEAKER PREMIUM KNIT**

- Optimal energy recovery through ShockAbsorb Eva midsole
- Breathable AirFlow mesh
- Optimal cushioning through antimicrobial Ortholite insoles

36, 37, 38, 39, 40, 41, 42, 43, 44, 45, 46, 47

5910  
**SNEAKER TEAM MESH**

- Optimal energy recovery through ShockAbsorb Eva midsole
- Breathable AirFlow mesh
- Fast-drying material through Fast-Dry Lining technology

36, 37, 38, 39, 40, 41, 42, 43, 44, 45, 46, 47

5700  
**JAKOLETTE LOCKER**

- Shower sandal with preformed footbed
- Quick-drying upper material
- Non-slip sole
- With velcro fastener
- Perfect for customization

36, 37, 38, 39, 40, 41, 42, 43, 44, 45, 46, 47



THOMEIER  
BLECHVERARBEITUNG GMBH  
SINCE 1989

**LTi**  
METALL  
TECHNIK

JAKO  
S

**RÜGER**  
Zimmererei | Holzbau





# CUSTOMIZATION

Uniform customization creates a sense of community. The logo makes a team outfit complete, individual and impressively carries the identity outwards. There is a suitable customization method for every requirement and article. For the optimal display of the motifs and the perfect appearance.

---

## **DIRECT-TO-GARMENT**

The ink is printed directly onto the textile by a printing head. The printing process is digital, so multi-coloured motifs and colour gradients are also possible.

## **SCREEN PRINTING**

The motifs are printed directly onto the textile through a screen. A separate screen is created for each colour. Colour gradients can only be indicated, but multi-coloured logos are possible. For customization with screen printing, we recommend using a migration blocker to achieve the best possible result.

---

## **FLOCK TRANSFER/FLEX TRANSFER**

The motifs are punched out of special flock or flex foil and pressed onto the textile with heat. The transfer enables the representation of monochrome motifs.

## **DIGITAL TRANSFER**

The motifs are printed directly on flex foil using a printer, then punched out and pressed onto the textile with heat. Multi-coloured and photo-realistic motifs and colour gradients are possible.


---

## **EMBROIDERY**

The motifs are embroidered onto the textiles using a multi-head embroidery machine. Before customization, an embroidery program of the motif is created. Multi-coloured motifs are possible.

JAKO AG | Amtstraße 82  
74673 Muldingen | Germany



 <sup>TM</sup> clevercare.info

Mit ähnlichen Farben waschen | Wash  
with similar colours | Laver avec des  
couleurs similaires

Pflegefähigkeit von Applikationen u.  
Drucke vorab prüfen | Check  
applicability and prints for textile care  
suitability in advance | Vérifiez à l'avance  
les conseils d'entretien des applications  
et des impressions

Logo oder Druck nicht bügeln | Do not  
iron logo or print | Ne pas repasser des  
logos ni des impressions

Nass in Form ziehen | reshape during  
wet | Remettre le vêtement en forme  
encore mouillé





# TEXTILE CARE

Washing and drying suitable for textiles is an essential part of textile care. In order to enjoy our textiles for a long time, you should absolutely pay attention to the care symbols on the label in the clothing. For more information visit [www.jako.de/en](http://www.jako.de/en)

## COTTON

Cotton is very durable and hard-wearing. Our cotton items can be washed at up to 60 °C. Dryers and irons are also no problem for the cotton items.

## POLYESTER

Polyester is very dimensionally stable and only creases a little. Our articles made of functional fibers can be washed at up to 40 °C. Dryers and irons are usually not necessary.



### GENERAL TIPS

All textiles should be washed separately by colour. Zips and buttons must be closed before washing. You should generally avoid using fabric softener. Prints and applications must not be ironed.



### IMPORTANT

The information on the care label only applies to the textile. The suitability of the customization to be cared for must be checked separately. In the event of improper textile care, we cannot accept any liability for any damage resulting therefrom.



### CLEVER TEXTILE CARE

Clever textile care protects the environment. The care label shows the maximum possible care. However, this is often not necessary. By washing at low temperatures or drying on the line, you can save a lot of energy and improve your carbon footprint. You can find more information at [www.clevercare.info](http://www.clevercare.info)





Mike is 184 cm tall  
and wears size L

Susanne is 165 cm tall  
and wears size 40

Daniel is 185 cm tall  
and wears size L

Anni is 173 cm tall  
and wears size 38



Elmar is 182 cm tall  
and wears size L

# SIZE CHART

## MEN

Unisex	S		M		L	XL		XXL	3XL		4XL		5XL	
Size	44	46	48	50	52	54	56	58	60	62	64	66	68	
Short sizes	-	-	24	25	26	27	28	29	30	-	-	-	-	

## WOMEN

Unisex	XS		S		M	L	XL		XXL
Size	34	36	38	40	42	44	46	48	50
Short sizes	-	18	19	20	21	22	23	-	-

## KIDS

Size	104	110	116	122	128	134	140	146	152	158	164
Age	3-4	4-5	5-6	6-7	7-8	8-9	9-10	10-11	11-12	12-13	13-14
Unisex	-			-			-			XS	

The size charts of our CORPORATE TEAMWEAR serve as a guide and orientation. We recommend sampling the articles at one of our local qualified specialist retail partners.

For the selection of the perfect size, it should be taken into account that the articles of our CORPORATE TEAMWEAR are cut a little wider than our team teamsport articles.





LOGISTICS



CONSTRUCTION MACHINERY



WINERY



BAKERY



CATERING



CAR REPAIR SHOP





PUBLIC SWIMMING POOL



PAINTING COMPANY



CONSTRUCTION COMPANY



ORCHESTRA



ERGOTHERAPY



AGRICULTURE



WOOD CONSTRUCTION

# WE ARE TEAM

IMPRINT: JAKO AG | Amtstraße 82 | 74673 Muldingen | Germany | [www.jako.de](http://www.jako.de)

Printed in Germany. The catalogue prices are the manufacturer's recommended retail price, including statutory VAT. They are valid from 01.01.2024. Please note our current price list. For photographic, reproduction and printing reasons, there may be colour deviations between the images and the original goods. We reserve the right to make technical changes in design, colour, function, and material in order to improve the product. For printing errors, we cannot accept any liability! We reserve the right to adjust the delivery times specified in the catalogues in the future if the associated product line is discontinued and / or the products can no longer be manufactured economically.